

# SOCIAL CAPITAL AND ECOLOGICAL RESTORATION IN THE IXTLERO REGION. PROSPECTS AND CHALLENGES



**Lorenzo Alejandro López Barbosa**  
Autonomous Agrarian University Antonio Narro  
Saltillo, Coahuila, México

# The study of the social capital

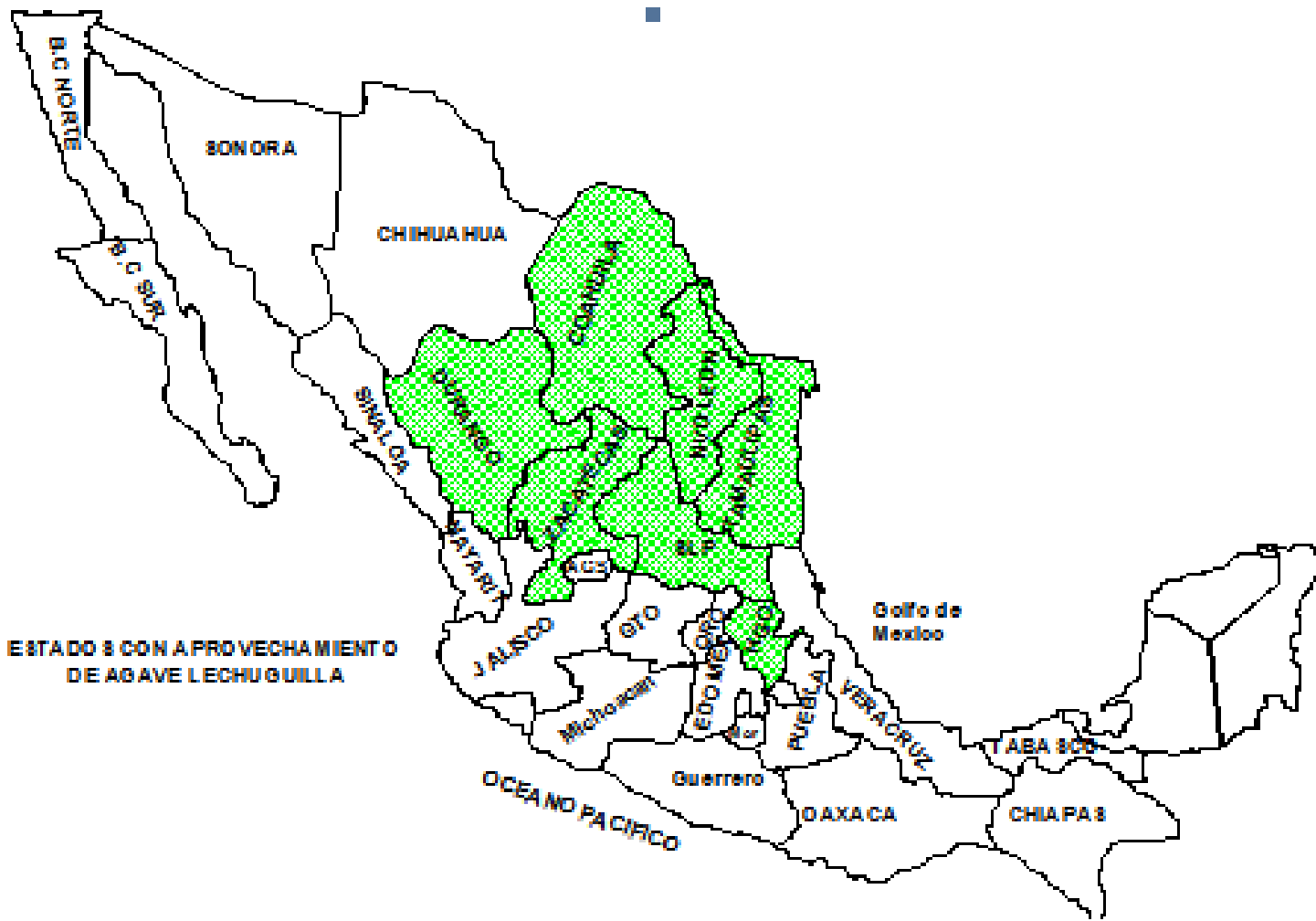
Can recognize organizational histories and specificities of the region: works, status and social projection.


Key to the opportunities for conservation



# The ixtlero space





 ESTADOS CON APROVECHAMIENTO DE AGAVE LECHUGUILLA



**An expression of  
the chihuahuan  
desert**

**Dominated by a  
desert of scrub  
and grassland**



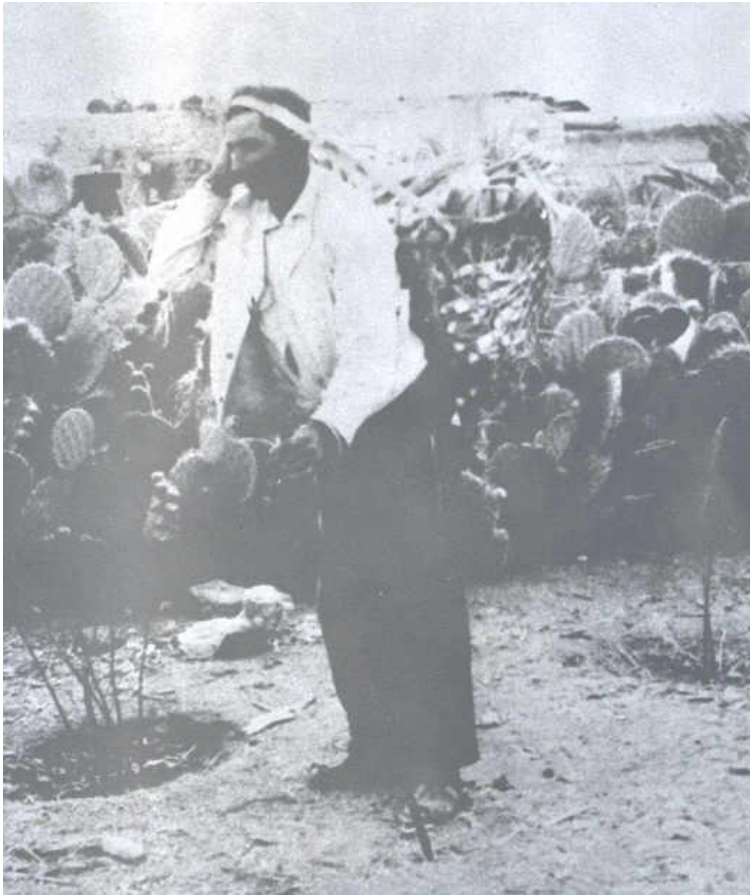
**Mezquite, lechuguilla, yucas, cacti, grassland plants, candelilla**

## **Lechuguilla (*Agave lechuguilla*) is an indicator species**

**The leaves are long, tough and rigid, with very sharp hard points which can easily penetrate clothing and even leather**



**Native Americans living there, have used fibers from the leaves (commonly called *ixtle*, but also a hard fiber known by the trade name Tampico fiber) to make ropes and other materials.**

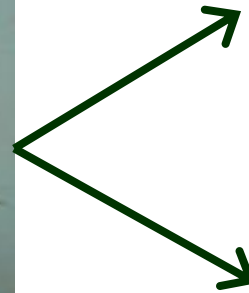


**Tradition an ancient  
activity**



**Ixtle is also being used in the industrial brush business.**

**It is resistant to most chemicals, alkaline solutions, acidic solutions, heat, etc.**





**The process of gathering ixtle begins with peasants called "talladores" taking to the hills in search the fiber plants**



**Part of their daily activities**

## Equipped with:

- Burros
- Baskets called 'oaxaca'
- Knife called 'cogollera'



**Collected by hand**

**Cut the center**

**Damaging the rest of the plant**







## Next: hand carver to obtain the fiber



The hands are affected by sap acid called 'guiche'



# Standardized process



**Rudimentary and home machines**



**Carver by machine, minimum cases**





**Or natural machine...**

**For hand crafts**



**Sold loose 'en greña'**

## Natural resource in danger

The method: pull all the plant  
to obtain the fiber









**Combine with  
goats....**

**in rangeland...**

**eating all the  
plants...**



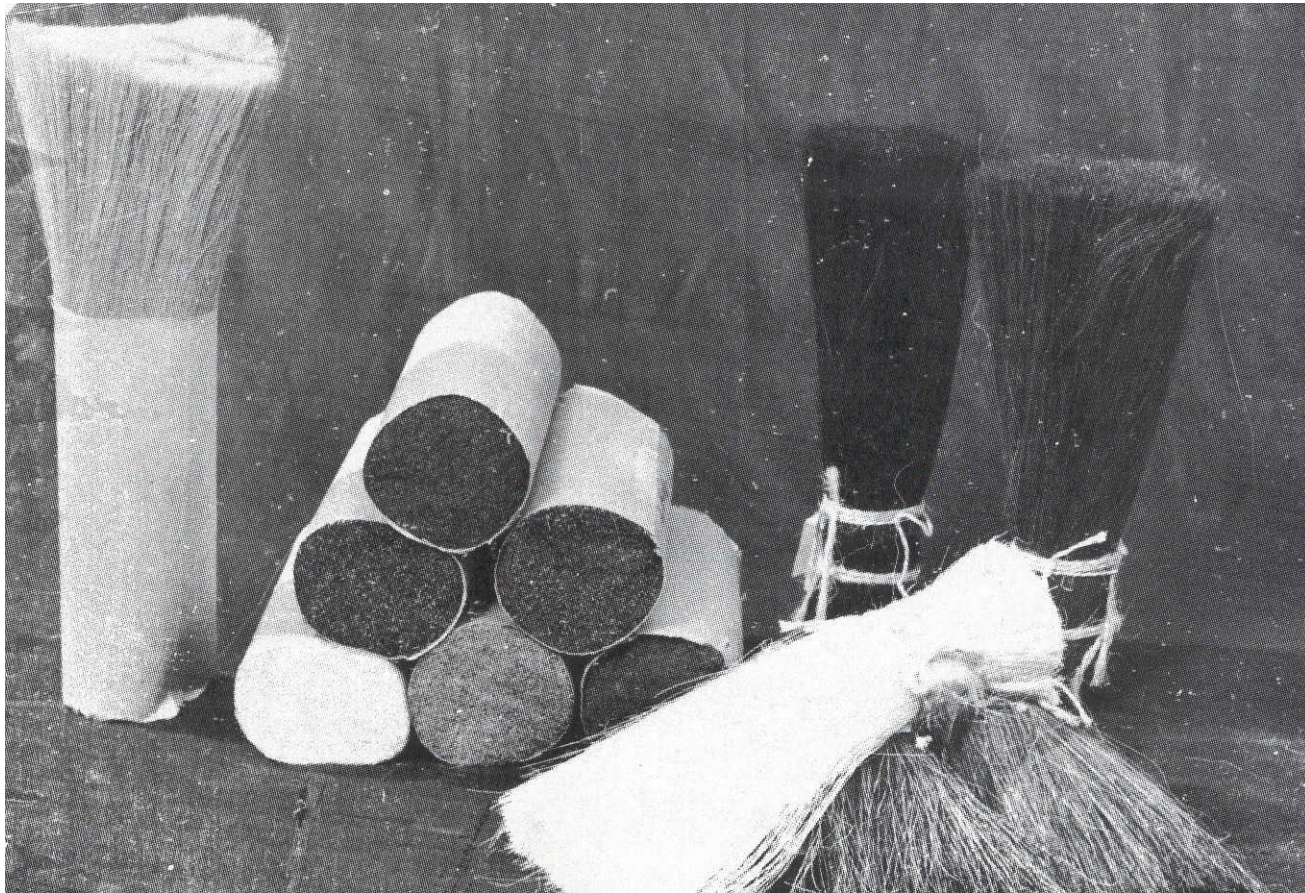


**Barter 'ixtle' in  
the local store...**

**For beans, and  
maize flour to  
made tortillas...**

**Local prize carved: 1.20 dollar (15-16 pesos)**

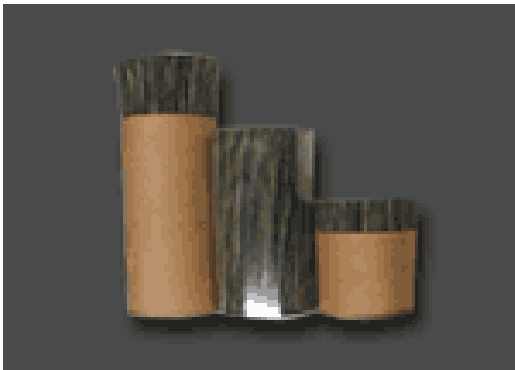
**Local prize processed by machine: 1 dollars (13 pesos)**



**Industrial process: obtain the appreciate 'carés'**



# Industrial process



\$ 2.99 dlls.



\$ 9.99 dlls.

\$ 28.22 dlls.

\$ 8 – 20 dlls.

‘carés’



24”

**Management and use, representing an identity relation**

**Organizational practices and history of collectivism, made an important social capital.**

**The history of 'La Forestal': Cooperatives federation**



**73 % of the peasants families at the 'ixtlero' region living in poverty conditions**







**Schooling:  
4.5 years**





**The organizational framework was destroyed and annihilated**

**Now: They operate individually**

**Unable to organize and represent to the economic agents who exploit them.**

**Excluded from the spaces that allow them access, preserve and manage their resources and opportunities to improve their quality of life.**



**The use, are in  
communal lands**

**The use permits are  
equal: communal**

**Te conservation,  
management,  
plantation, reforestation  
an restoration, are a  
communal activities**



**Thats the challenge**

**The loss of social capital possessed by the organization who took part has come to promote relations of unequal exchange, and therefore is complex to reconstitute you organizations**







**Low productivity and technological level**

## New option: industrializing by they





# Local options







## Hand crafts





## **Significance of social capital for development of territories**

- Power and consolidated joint action and collaborative plans to restore and conserve natural capital
- Favors the development of initiatives in line with the specific realities of the social
- Integrative relation natural capital - social capital

## Rural development in the area: the key is participation

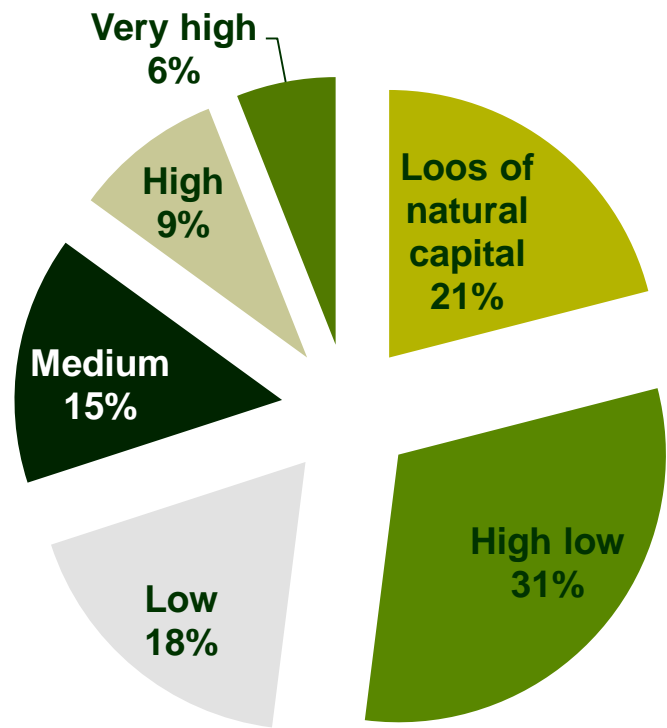


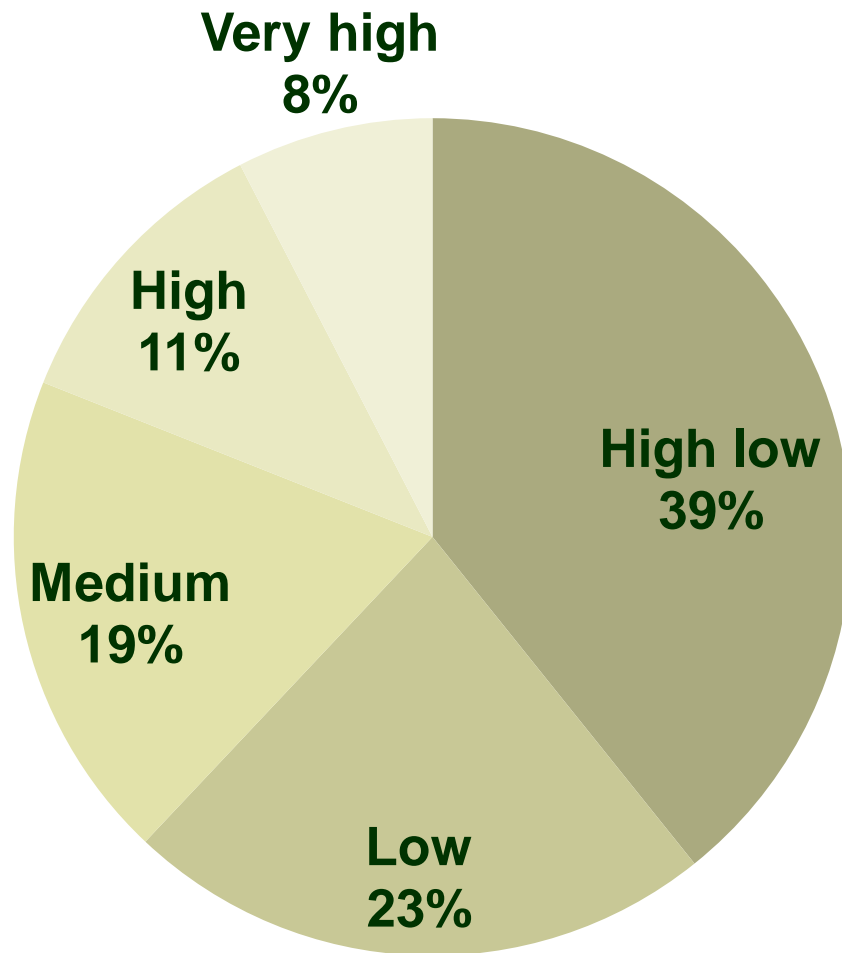


# Study the reality by most index

- **Pressure about forest areas**
- **Illegal activities, pest, change of land use.**
- **Activities of protection and conservation**
- **Monitoring combat, forest fires, community conservation areas.**
- **Social capital**
- **Participation, organization, unpaid community work. Willingness to participate in local governance. Disposal**
- **Development of the forest community activities.**
- **Vertical integration, diversification of forest production, productive and financial assets in the hands of communities.**
- **Institutional development**
- **Rules, local governance, fortress of local institutions.**

# Activities of protection and conservation index



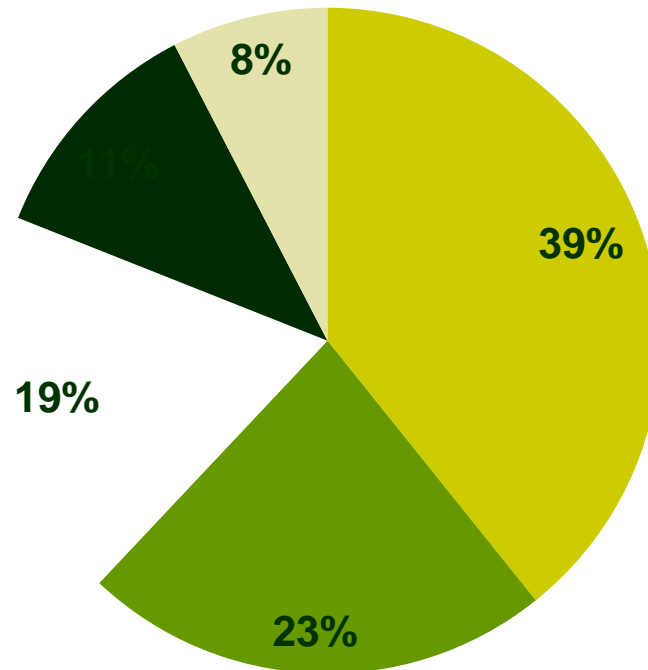


**Social capital index**



# Institutional development index

■ High low ■ Low ■ Medium ■ High ■ Very high



**The legal recognition of property rights to local communities of forest users is a crucial element for sustainability.**

**We need to  
create  
assets for  
following  
generation**





**We need to improve:**

**The patient rework or rebuilding the institutions that govern, behavior and relationships among individuals in their productive activity.**

**Ixtlero peasants obey a logic of production, where the permanence of the family is the foundation that integrates productive resources**

**Reduce the vulnerability**

**Improve**





**The development of ixtleros activities provides strong incentives for institutional development.**

**Communities with more developed economies and local institutions are better able to respond to various pressures and to invest in conservation and restoration.**

**It is important to strengthen local capacity to build a sustainable future and to create viable local governance.**

**Hunger and poverty are symptoms of a rural-urban development, poorly planned and misguided**



**Restoration the common areas needs  
collaboration**

**Collaboration needs cooperation,  
participation, empowerment and organization**



**Cooperation  
requires minimum  
social capital  
investment**





# Measures of rural development

- **The rural development must be done by peasants themselves.**
- **The major measure is the collective action, from cooperative groups to cooperative enterprises.**
- **Actors of the rural development are basic communities.**
- **The relations between actors are called social capital .**
- **The best institutions are social economy institutions.**



# **New questions we work:**

**Government is the best choice to build social capital?**

**Education is the principal key?**

**Unlike other forms of capital consumed in its use, social capital is the only way that the more capital is used more it grows.**

***Albert Hirschman***



**Thank you**